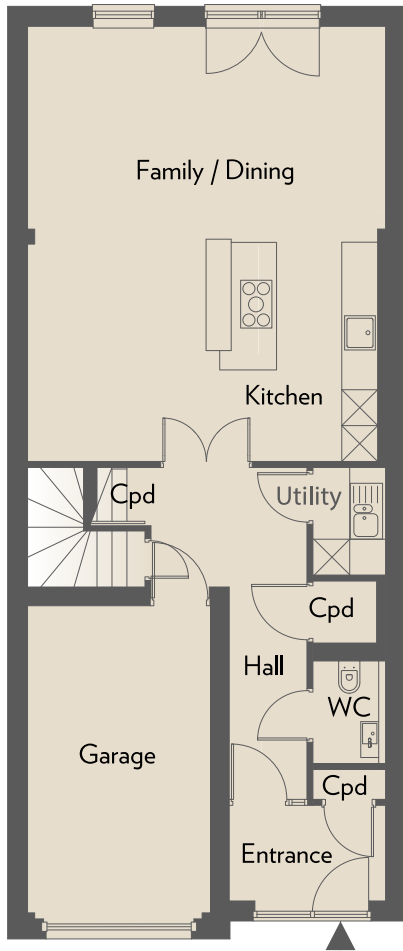


# TOWNHOUSE *One*

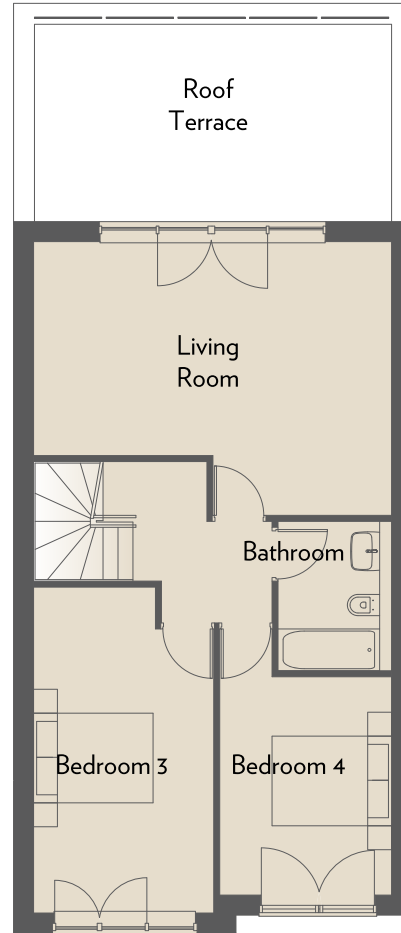
TOWNHOUSE ONE  
199 SQM / 2,137 SQFT

ROOM	DIMENSIONS	
Kitchen/ Family/Dining	5.95m x 7.28m	19'6" x 23'1"
Living Room	5.97m x 4.58m	19'7" x 15'0"
Bedroom 1	5.27m x 3.15m	17'7" x 10'4"
Bedroom 2	3.38m x 3.02m	12'9" x 11'4"
Bedroom 3	3.27m x 3.38m	9'11" x 15'7"
Bedroom 4	3.59m x 2.97m	9'4" x 12'0"

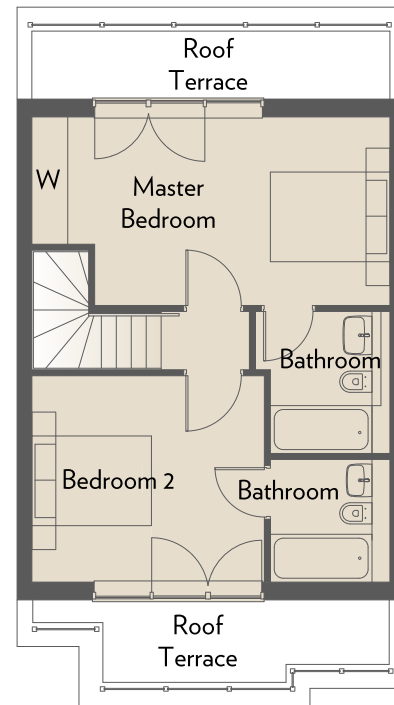
2 Car Parking Spaces



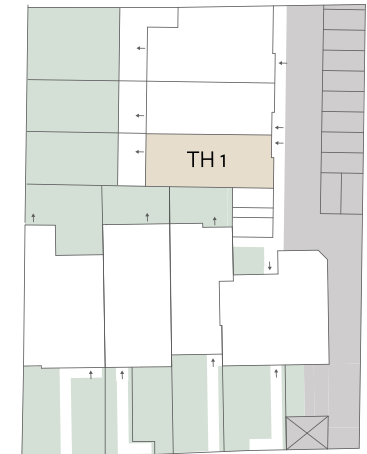
GROUND FLOOR



FIRST FLOOR



SECOND FLOOR



All plans are not drawn to scale and are for illustrative purposes only. Consequently they do not form any part of any contract. All kitchens, bathrooms and en-suite layouts may be subject to minor alterations.