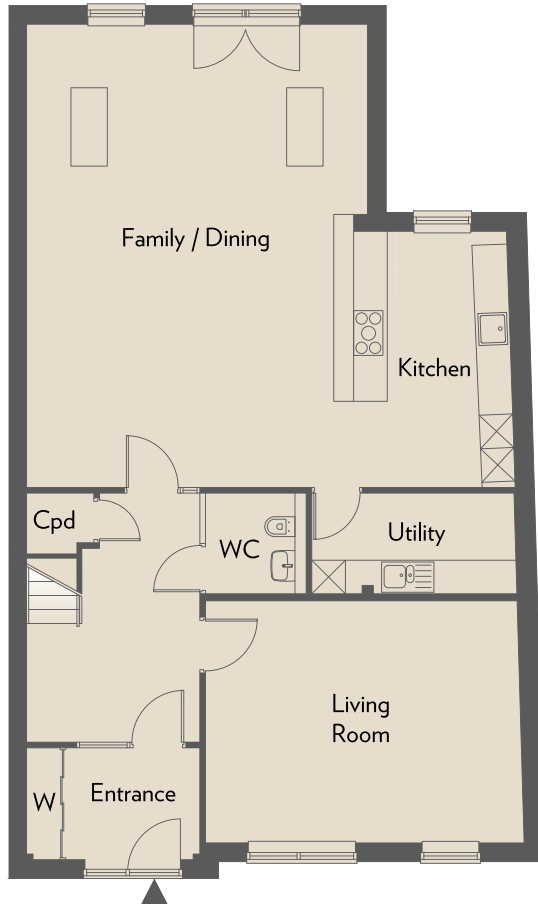


# TOWNHOUSE *Three*

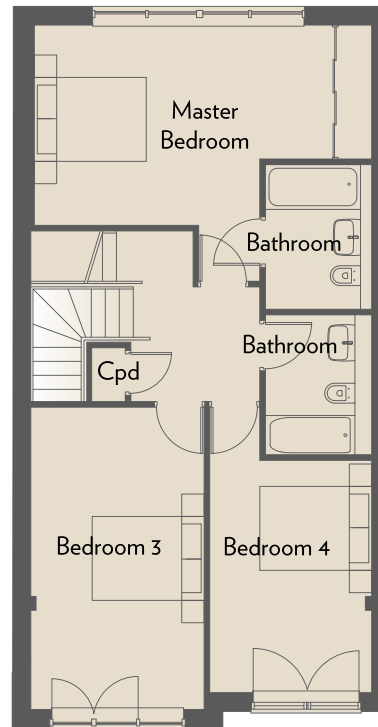
TOWNHOUSE THREE  
234 SQM / 2,514 SQFT

ROOM	DIMENSIONS	
Kitchen/ Family/Dining	8.70m x 8.28m	28'5" x 27'2"
Living Room	5.57m x 4.33m	18'3" x 14'2"
Bedroom 1	5.33m x 3.58m	17'6" x 11'9"
Bedroom 2	4.87m x 3.95m	16'0" x 13'0"
Bedroom 3	3.08m x 3.40m	10'1" x 17'9"
Bedroom 4	3.90m x 2.15m	9'6" x 13'7"
Bedroom 5	4.87m x 3.13m	16'0" x 10'3"

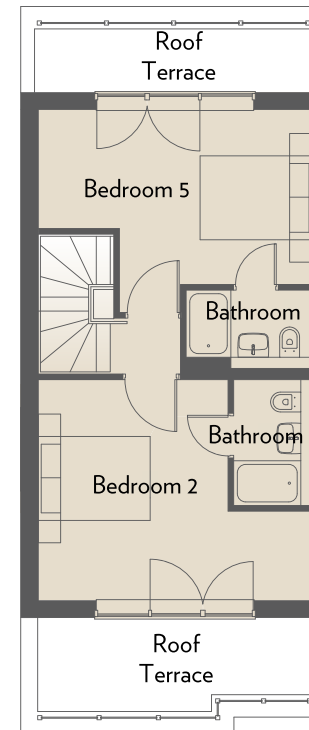
2 Car Parking Spaces



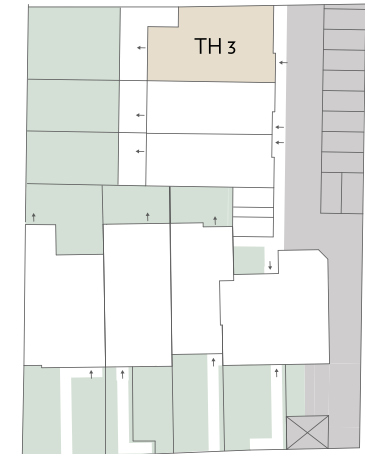
GROUND FLOOR



FIRST FLOOR



SECOND FLOOR



All plans are not drawn to scale and are for illustrative purposes only. Consequently they do not form any part of any contract. All kitchens, bathrooms and en-suite layouts may be subject to minor alterations.